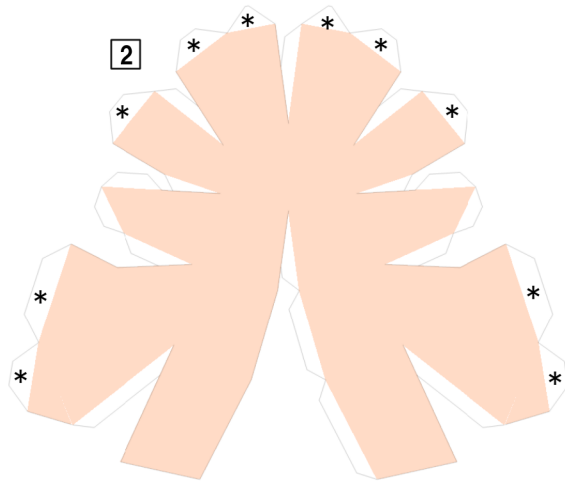
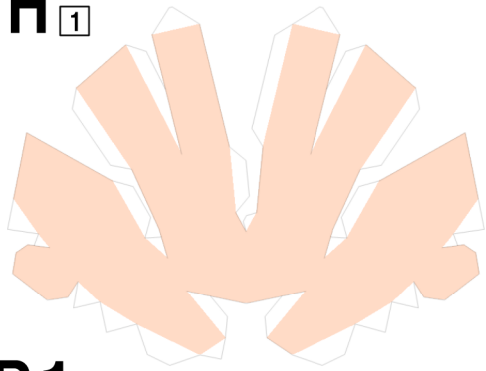
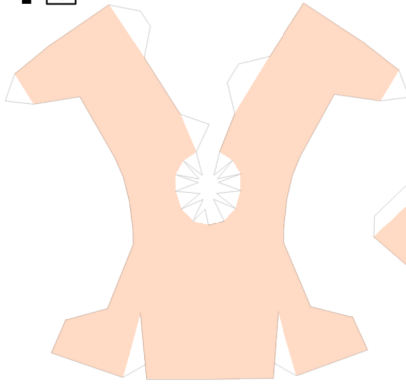


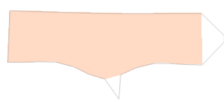
H



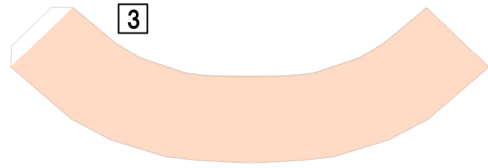
B1



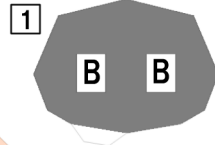
2



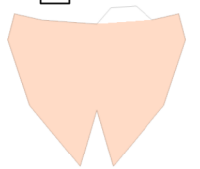
3



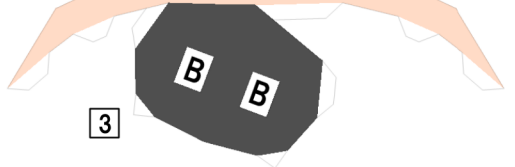
B2



2



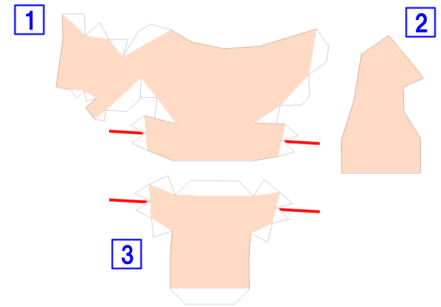
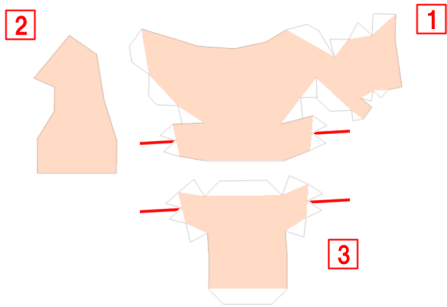
3



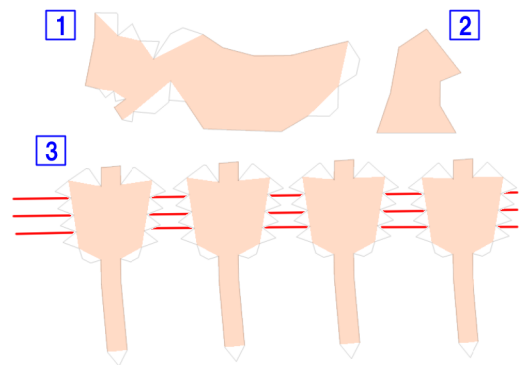
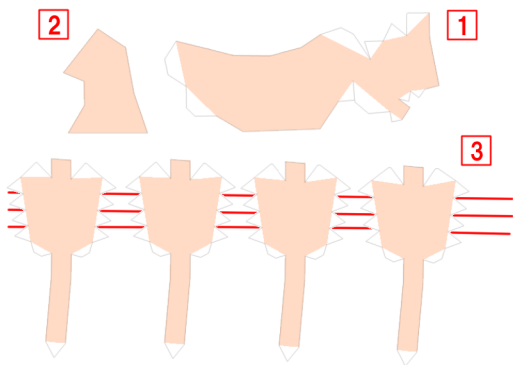
R

L

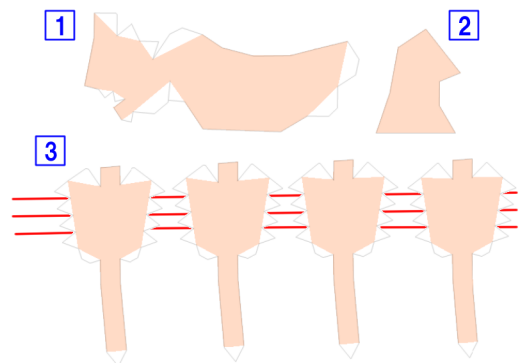
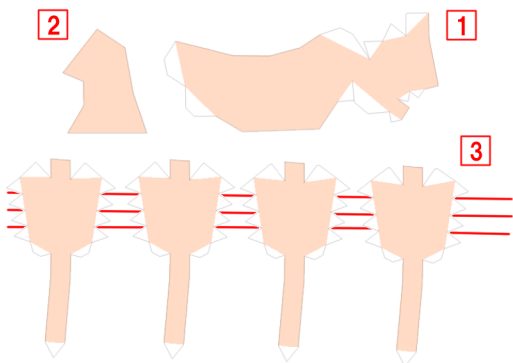
HAND 1

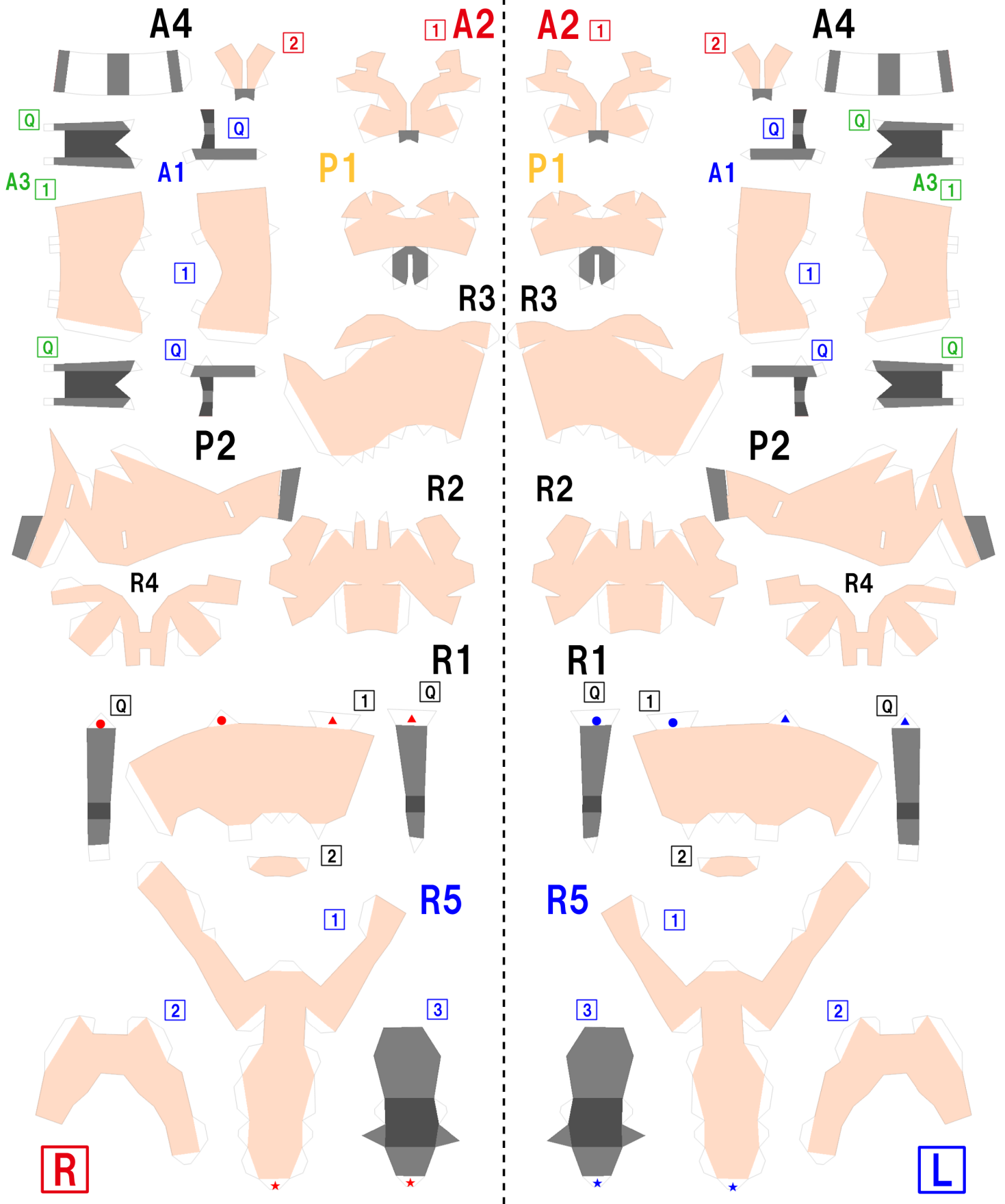


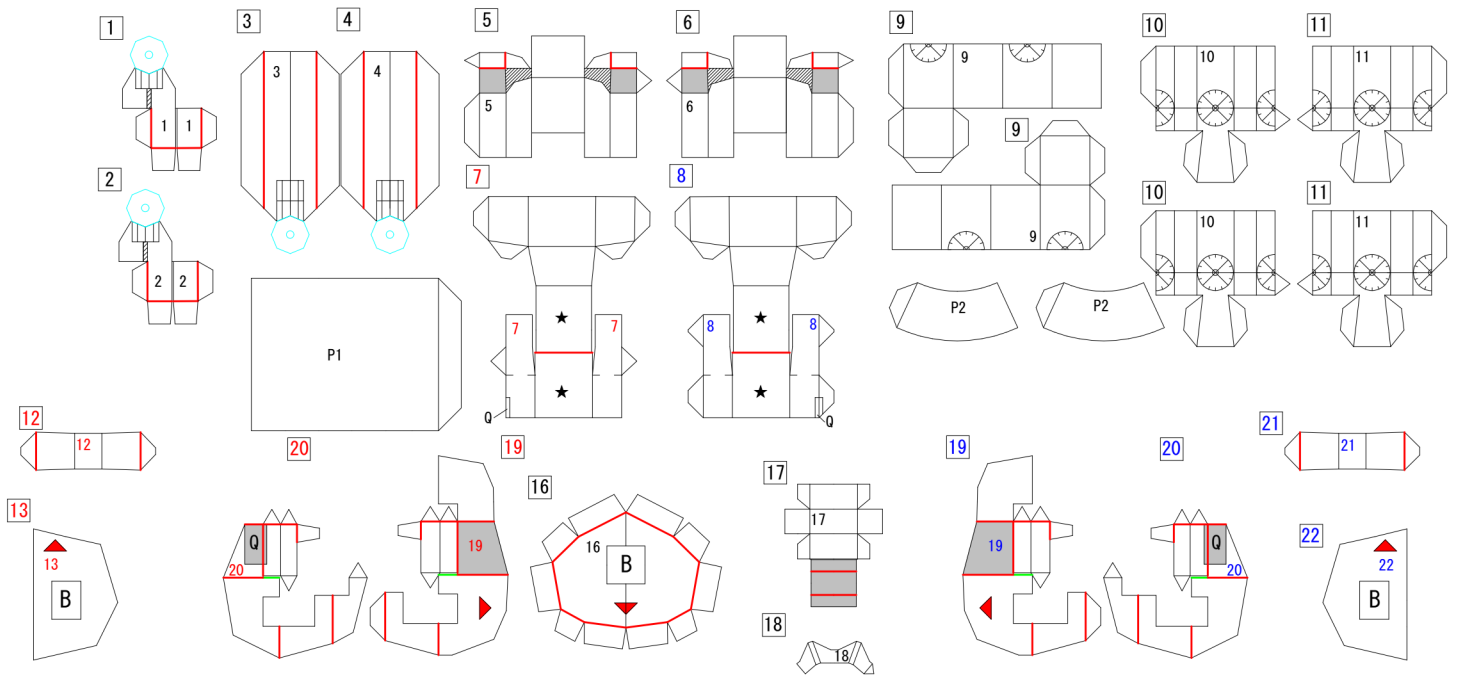
HAND 2



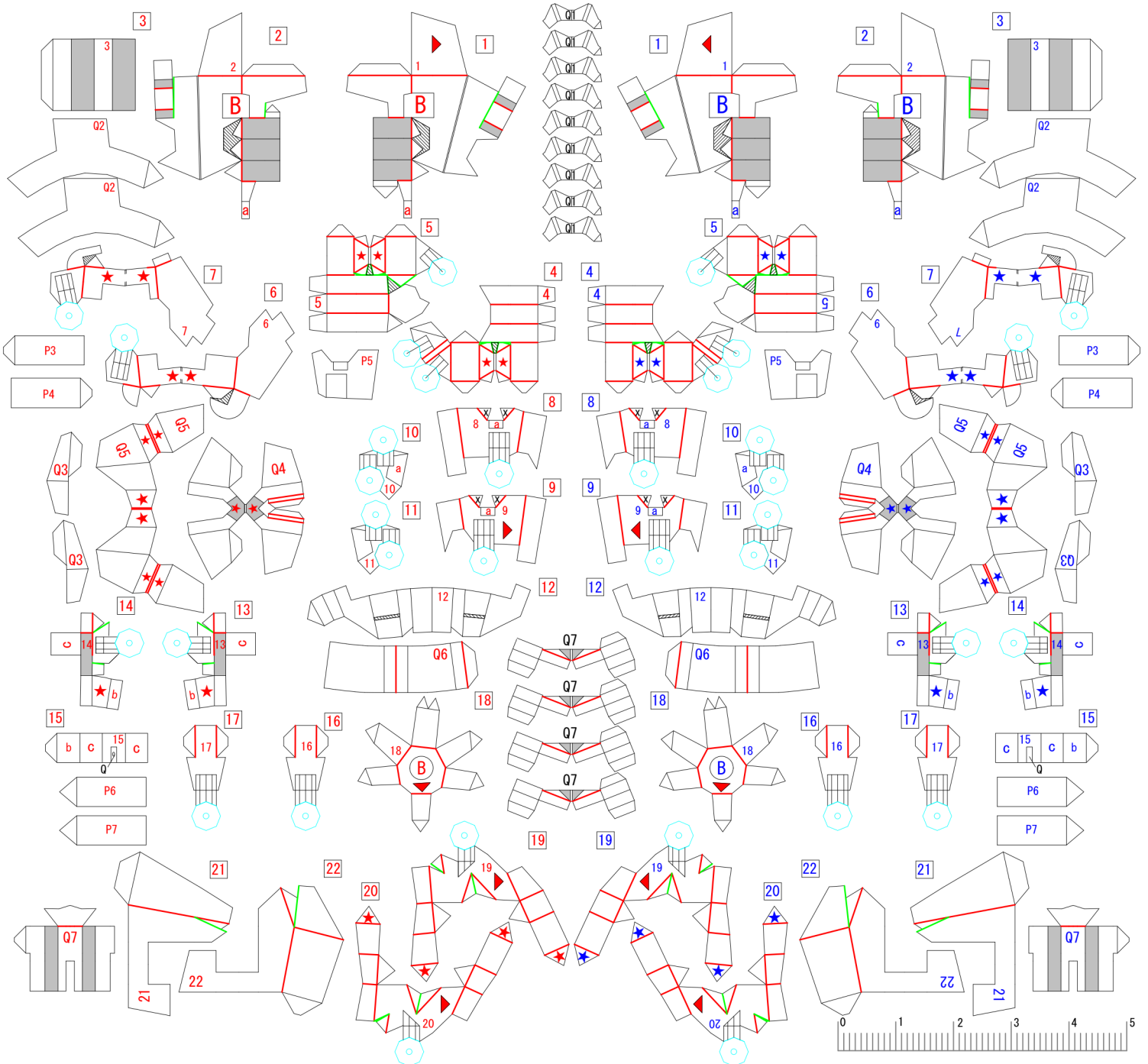
HAND 2



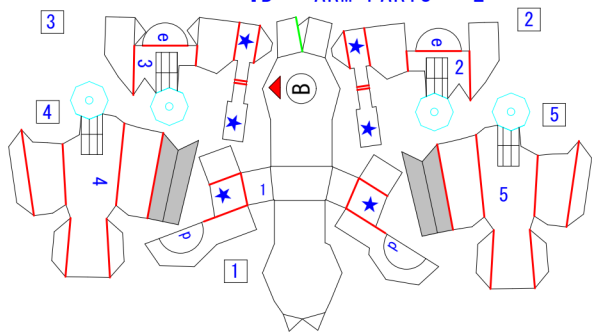




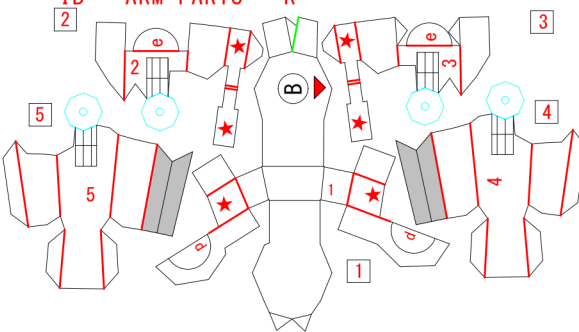
IB - REG PARTS - R IB - REG PARTS - L



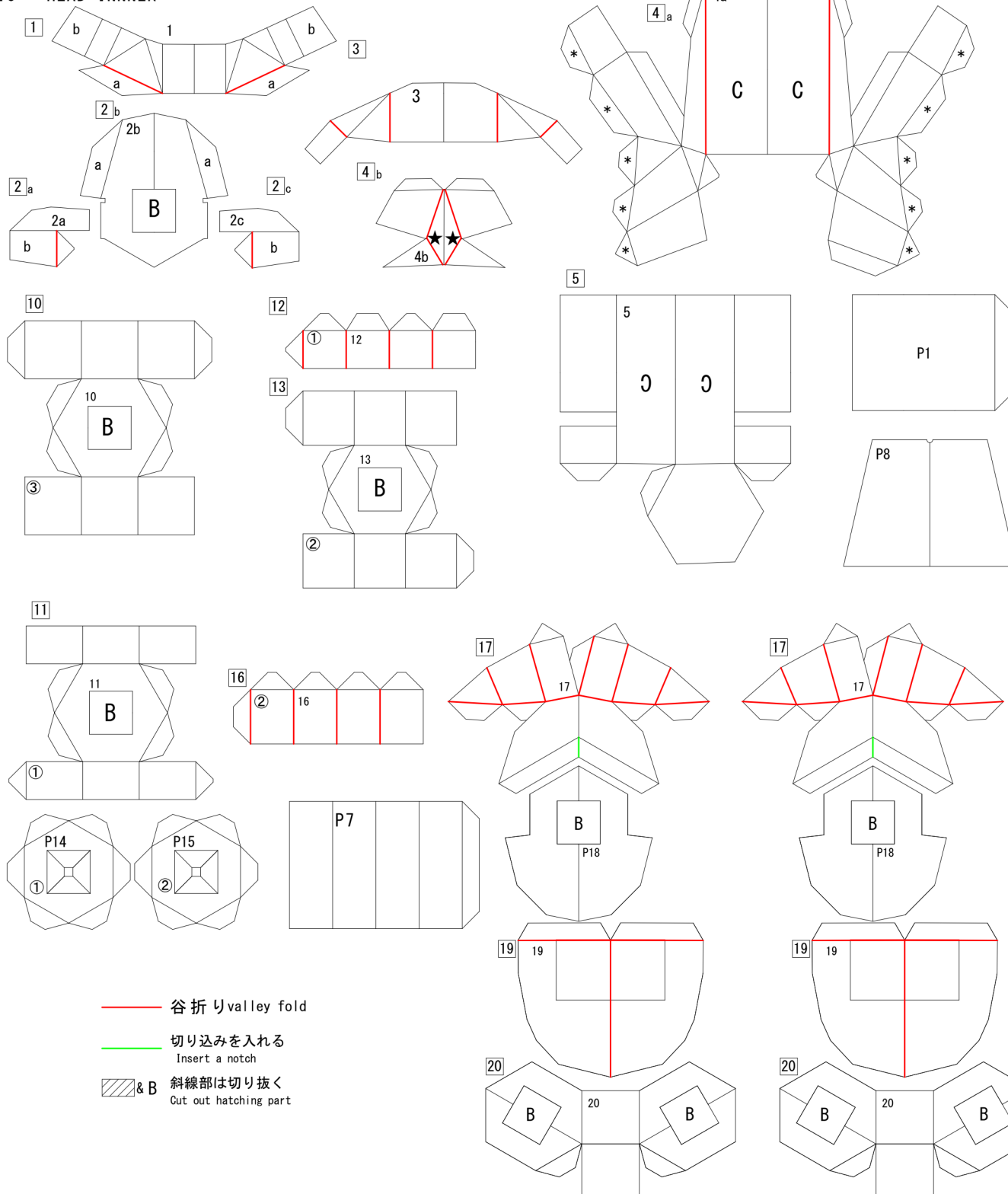
IB - ARM PARTS - L



IB - ARM PARTS - R



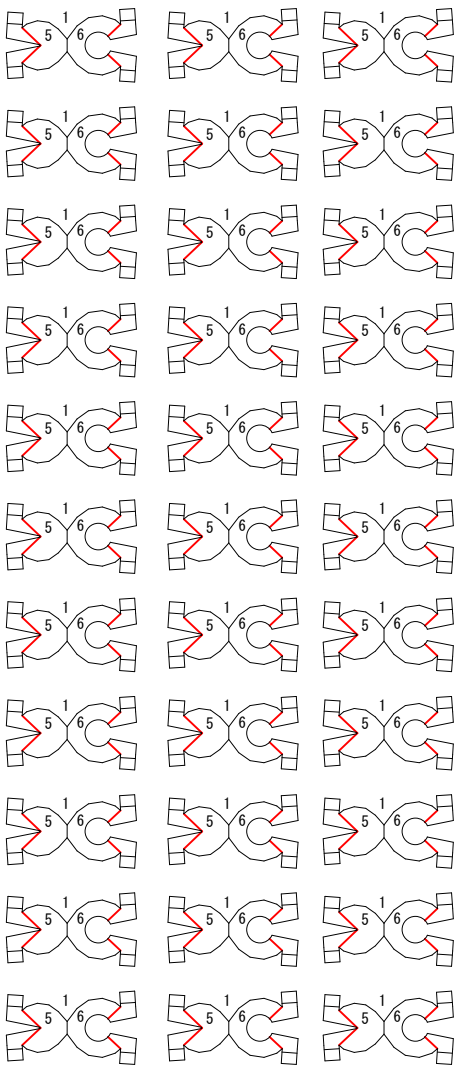
IC - HEAD INNER



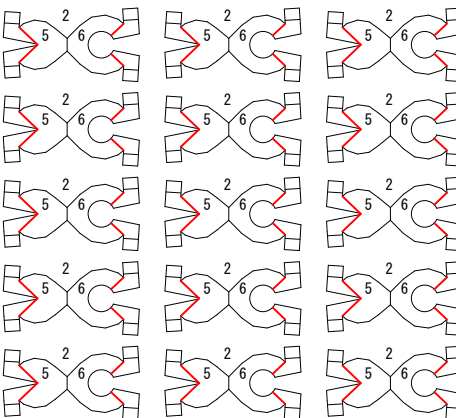
- 谷折り valley fold
- 切り込みを入れる
Insert a notch
- & B 斜線部は切り抜く
Cut out hatching part



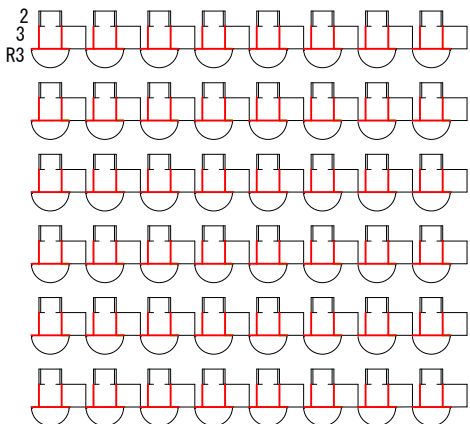
JB₅₁₆



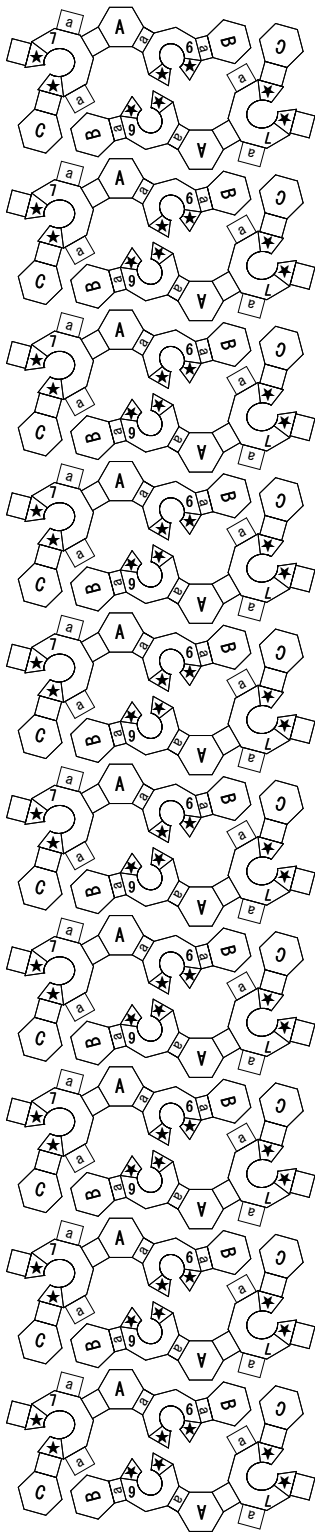
JB₅₂₆



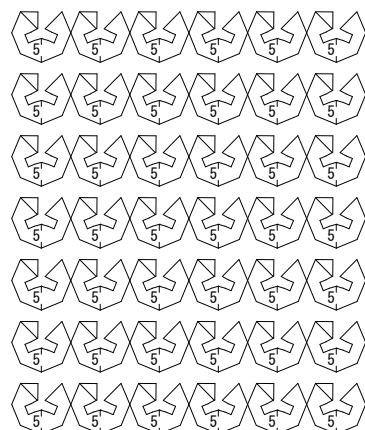
JF_{5T2}



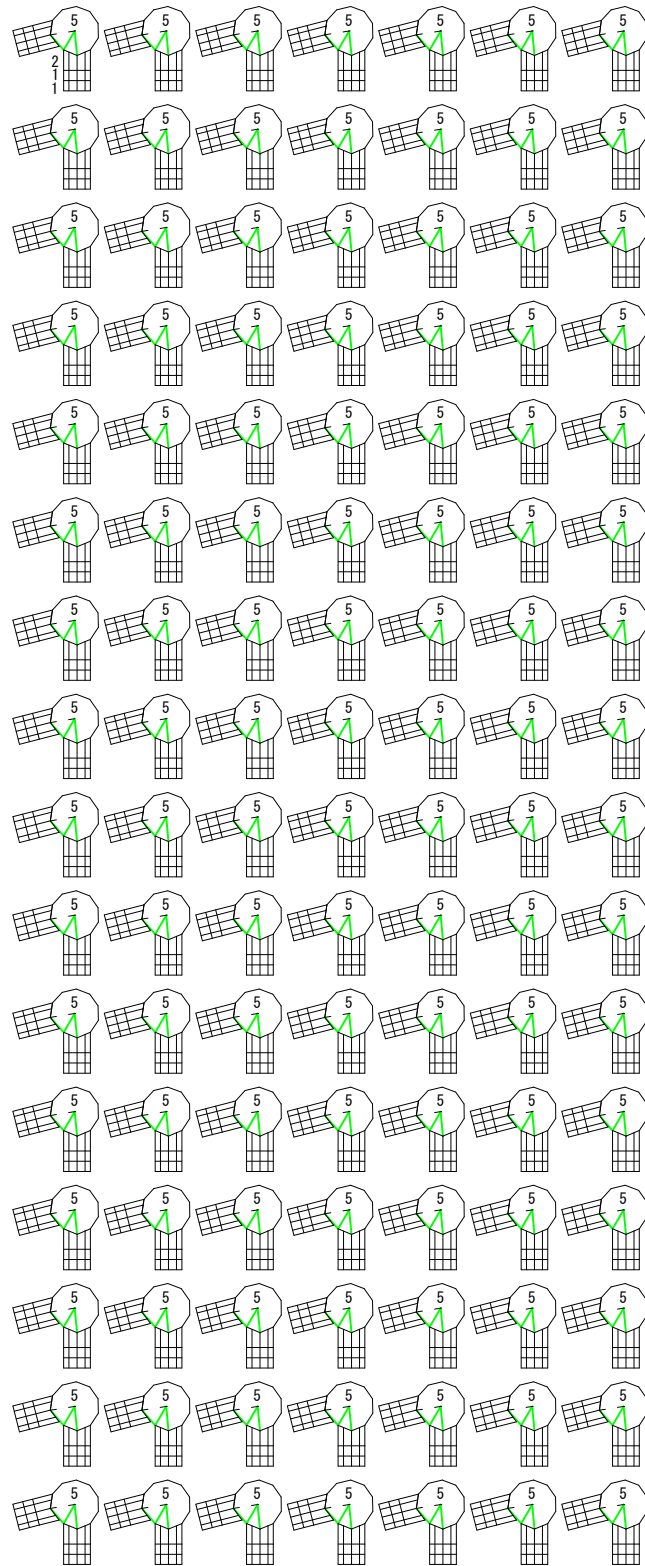
JE



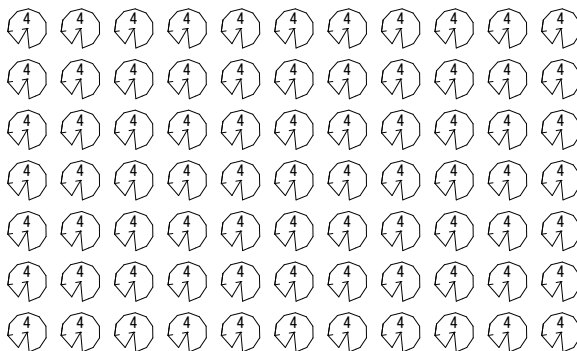
JG

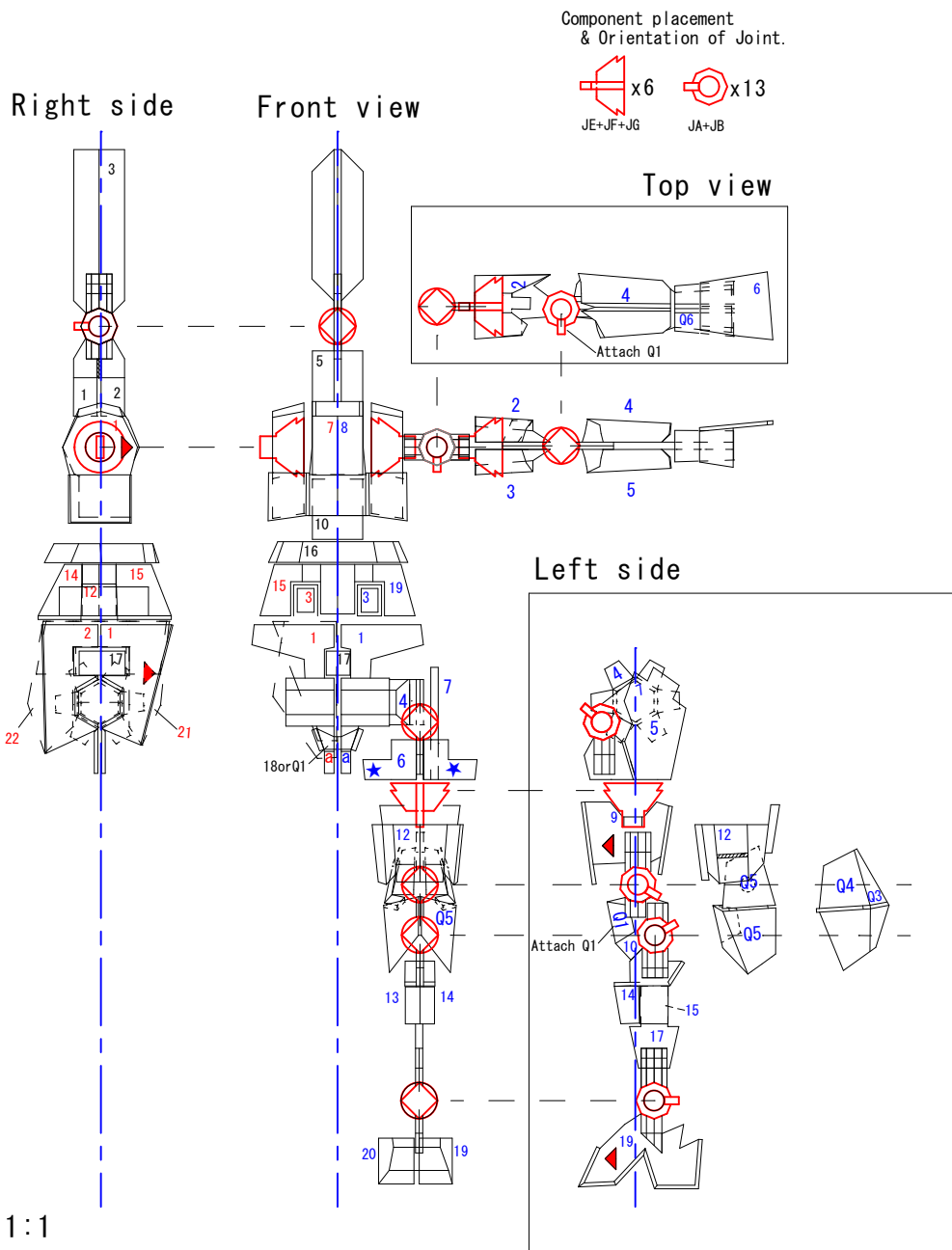


JA_{5T2}



OPTION





Body Bone V7. 3m

©2018 @kujiracraft

